



CLEVELAND PARK
HISTORICAL SOCIETY
presents

Bruce Wentworth, AIA
bwentworth@AsktheArchitect.org

ASK THE
ARCHITECT
.ORG



WENTWORTH
ARCHITECTURE
INTERIORS
CONSTRUCTION

Preservation Café
A Trip Through Historic
Cleveland Park
Featuring
Bruce Wentworth, AIA

My First Old House

Capitol Hill



Before Restoration

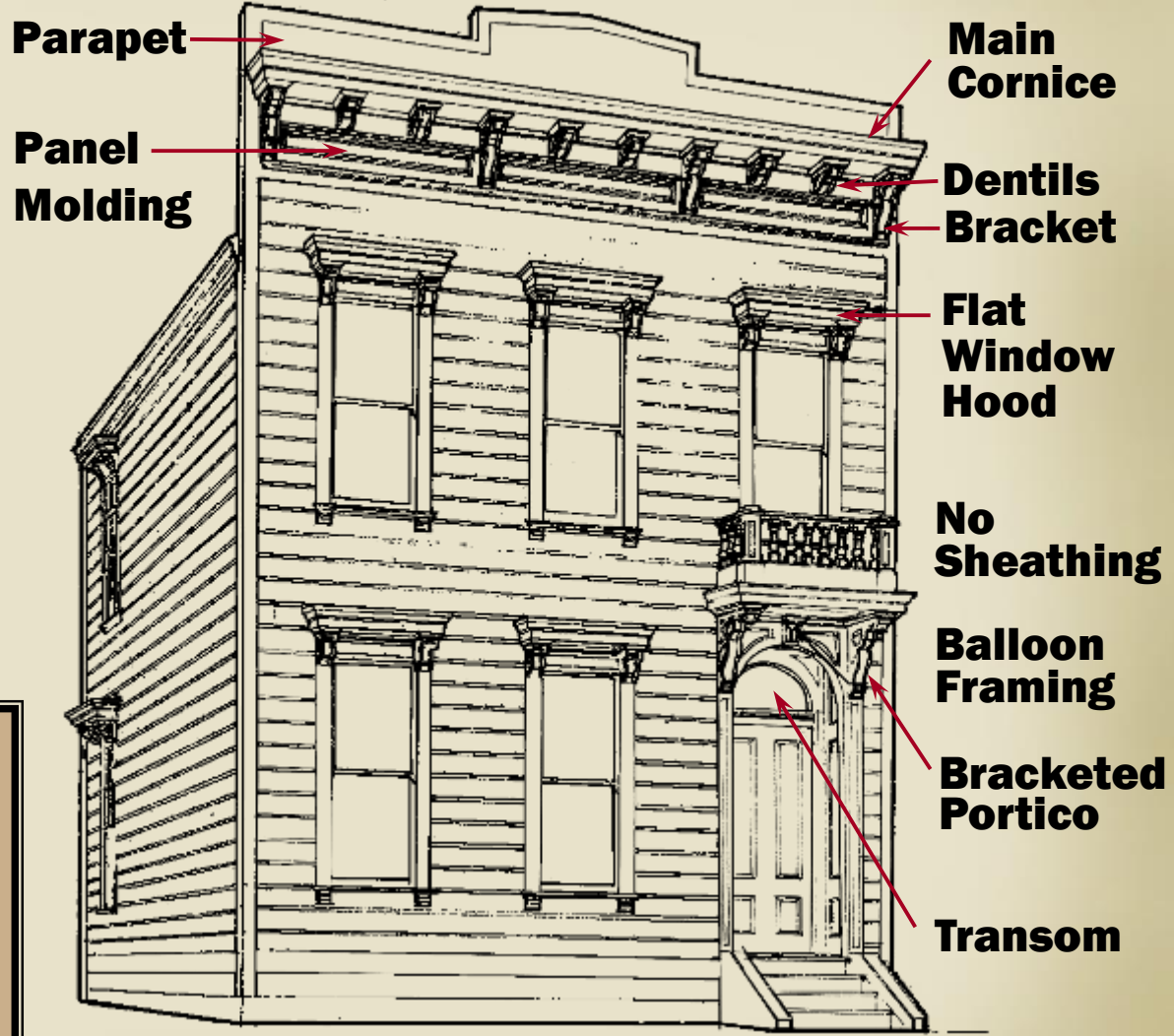


During Façade Restoration



Built 1872

**Flat-Front
Italianate
1840-1885**



Drawing by Stephen Rynerson, architectural designer, San Francisco Victoriana. *A Gift to the Street*, 1976.

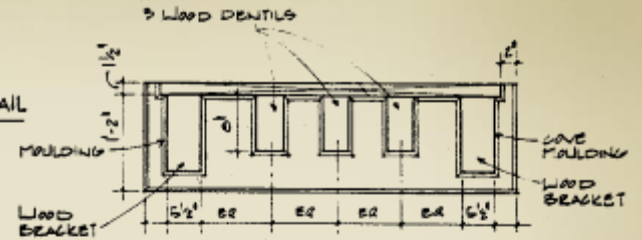


Door Hood Detail

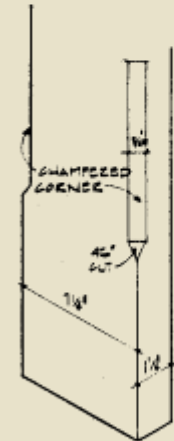
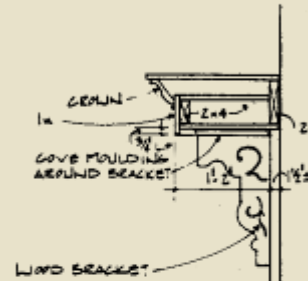
**Flat-Front
Italianate**



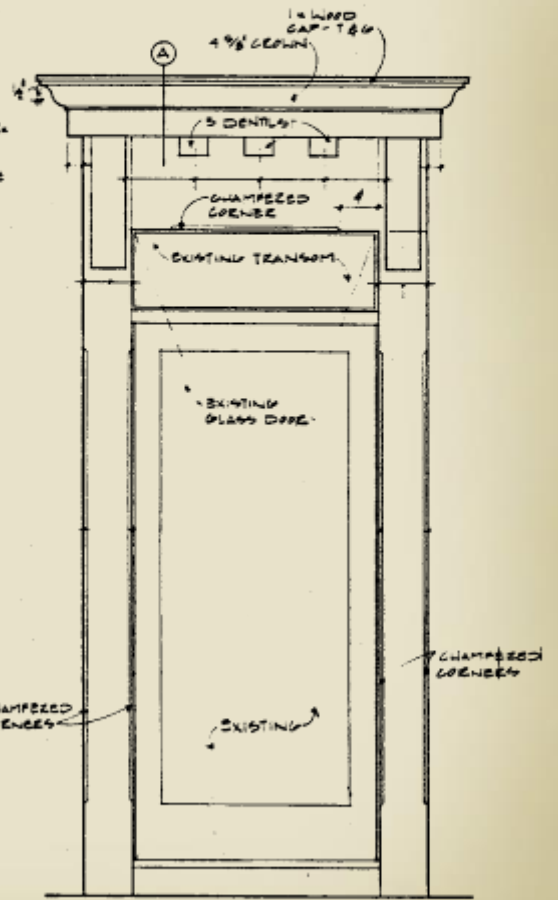
DENTIL BLOCK DETAIL



REFLECTED SOFFIT PLAN OF CANOPY



CHAMFER CORNER DETAIL

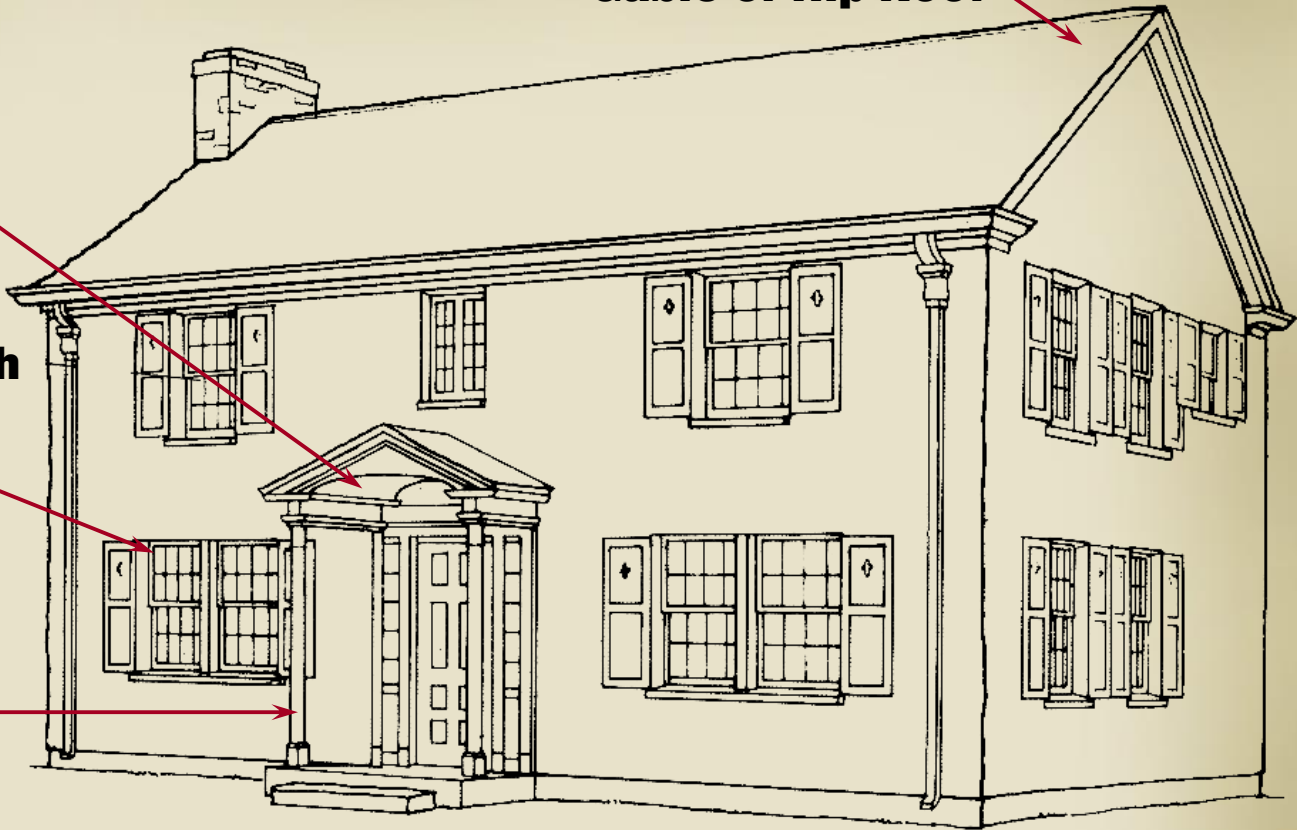


FRONT ELEVATION

DETAIL 'A'
SCALE: 1"=2'-0"

VICTORIAN DOOR CANOPY / TRIM (c. 1872)

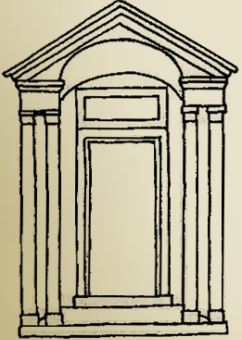
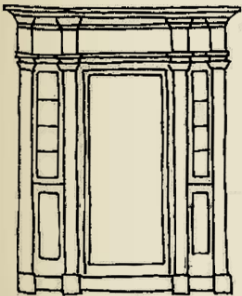
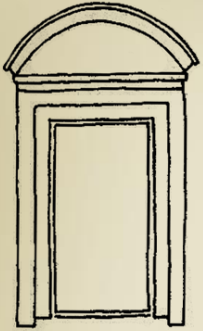
Gable or Hip Roof



Portico with Curved Underside

Windows with Double-Hung Sashes

Columns or Pilasters



Colonial Revival Entrances

Drawings by Juan Rodriguez-Arnaiz, A Field Guide to American Houses, 1984.

Colonial Revival

1880-1955



**Full-Front
Gambrel**

**Adamesque Swags
on Porch Frieze**

Ionic Capital

Fanlight

3225 Highland Place

Colonial Revival





3400 Newark St.



Colonial Revival



Gable Roof

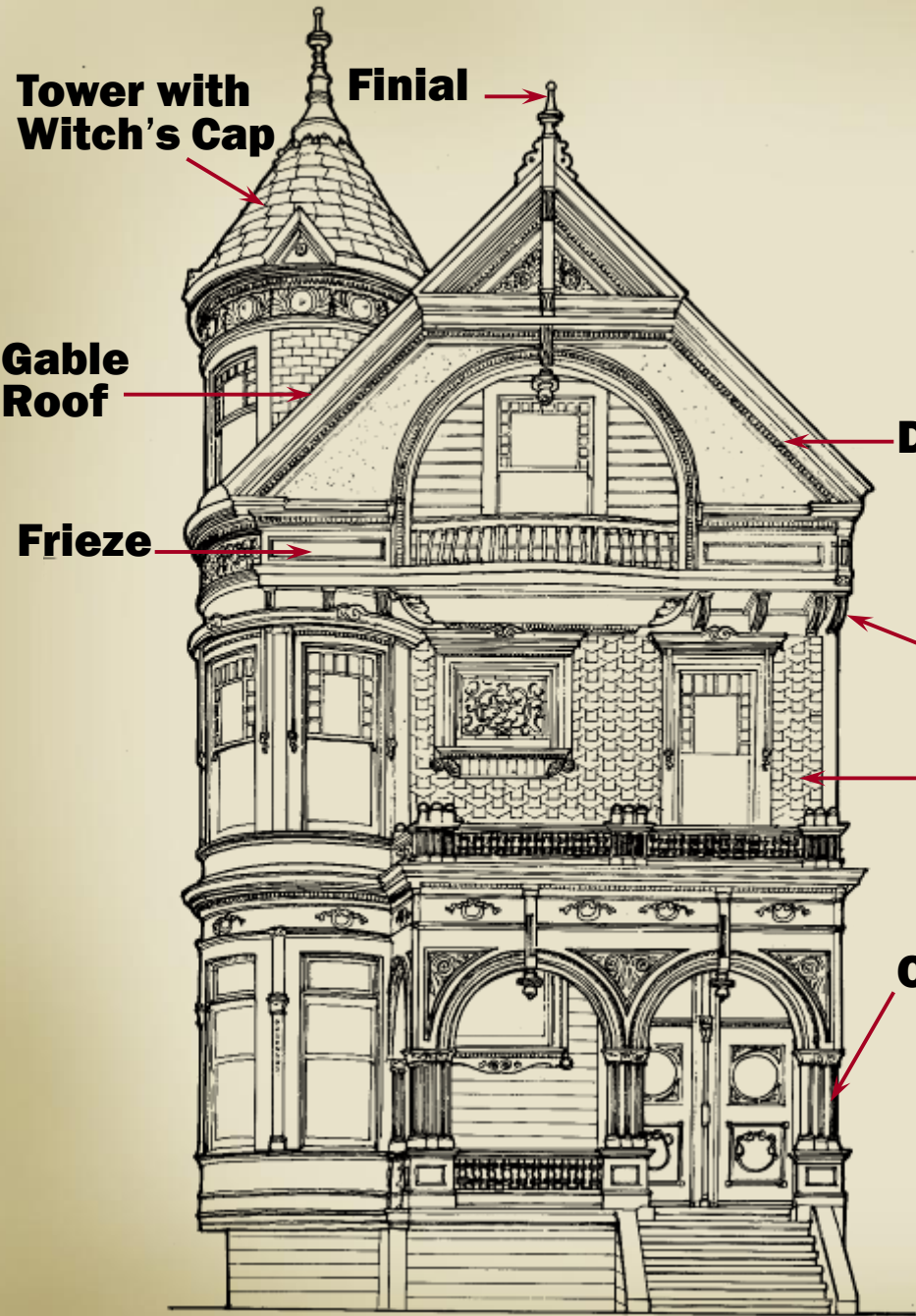
Double-Hung Windows



Columned Portico

3542 Newark St.

Colonial Revival



Tower with Witch's Cap

Finial

Gable Roof

Frieze

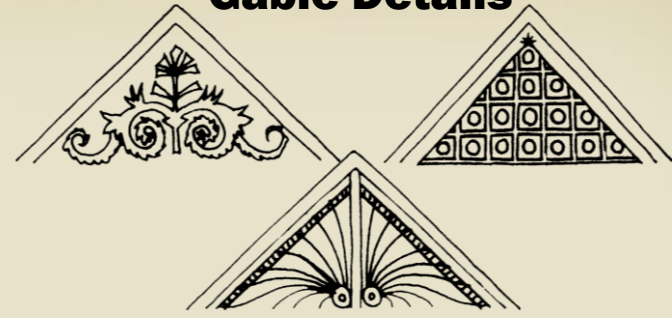
Dentils

Brackets

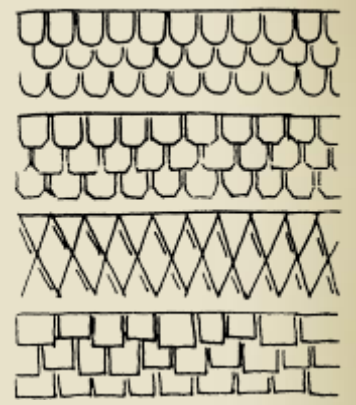
Decorative Shingles

Columns

Gable Details



Wall Texture Patterns



Queen Anne
1880-1910

Drawing by Stephen Rynerson, architectural designer, San Francisco Victoriana. A Gift to the Street, 1976.

Gable roof

Tower

Dentils

Columns



3562 Macomb St.

Queen Anne

Tower

**Half
Timbering**

**Decorated
Frieze**



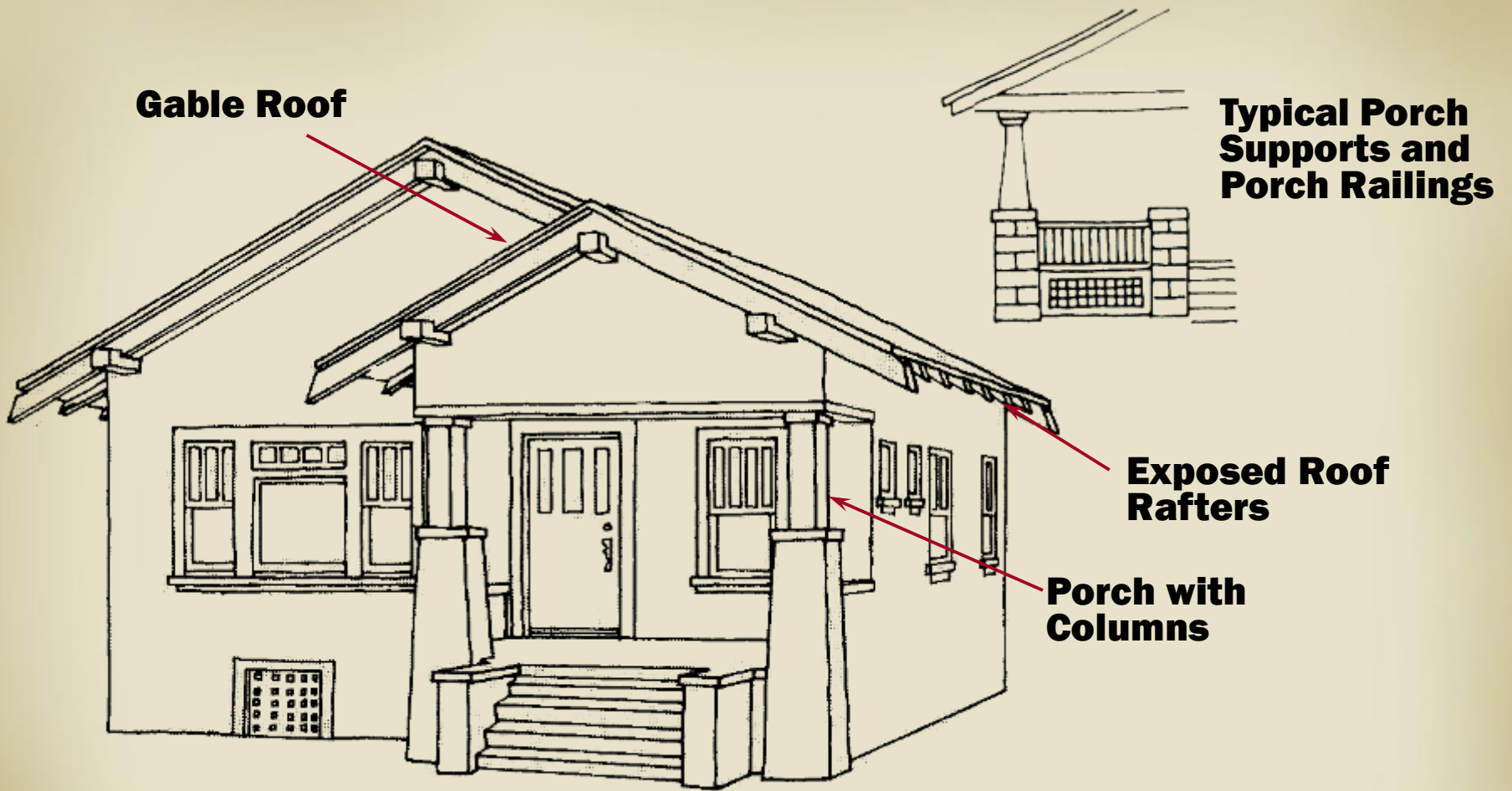
3035 Newark St.

**Gable
Detailing**

**Spindle
Work**

Queen Anne





Drawing by Juan Rodriguez-Arnaiz, A Field Guide to American Houses, 1984.

Common Siding Treatments:
Clapboard, Shingle,
Stone, brick,
Stucco, &
Concrete block.

Bungalow/Craftsman
1905-1930



Shed dormer

Shingle

Stone



2906 Ordway St.

2908 Ordway St.

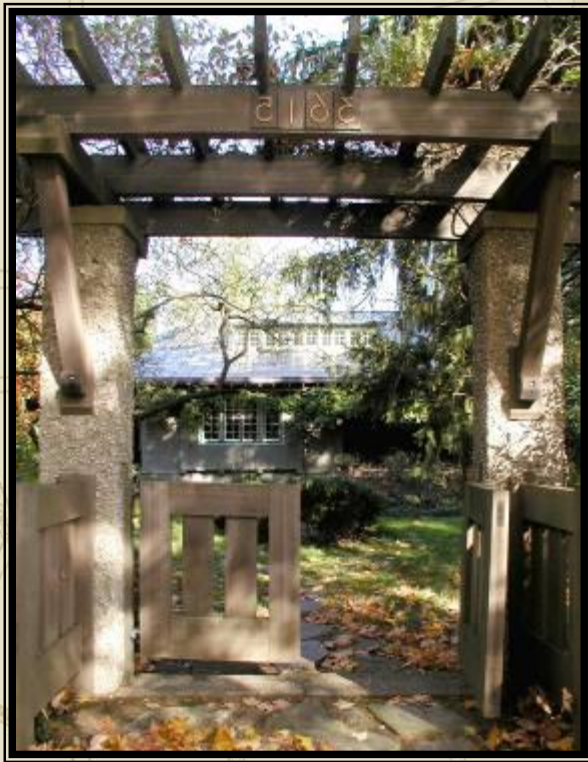


Gable Dormer

Columns

Bungalow





Entrance Pergola



Bungalow



3615 Macomb St.

**Gable roofs and
multiple front gables**

Half-timbering

**Common Siding
Treatments:
Brick, Stone,
Stucco,
Wood Cladding**



**Casement or
double-hung
windows**

Drawing by Juan Rodriguez-Arnaiz, A Field Guide to American Houses, 1984.

Common Entries



Tudor
1890-1940



Gable dormer

Vergeboards

Finial

Half-timbering

Brackets

3110 Newark St.



Tudor



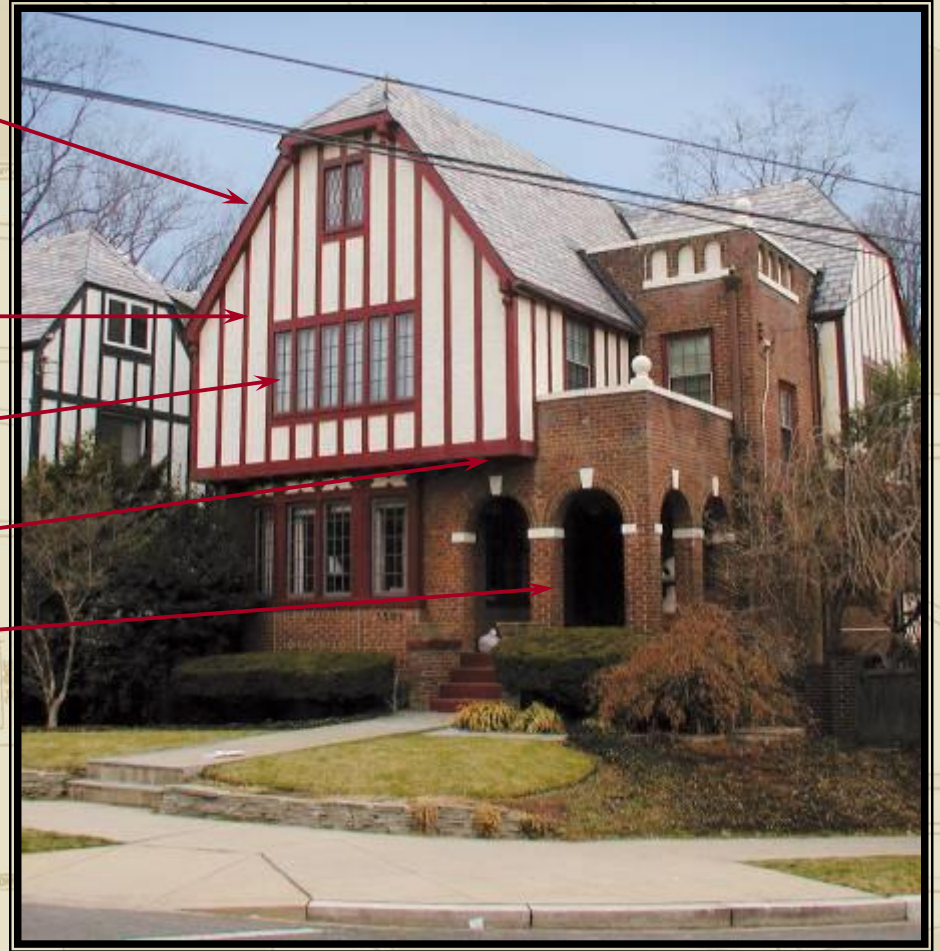
Steeply Pitched Gable Roof

Half-Timbering

Casement Windows

Cast Stone Trim

Entry Porch



3501 34th St.



Tudor

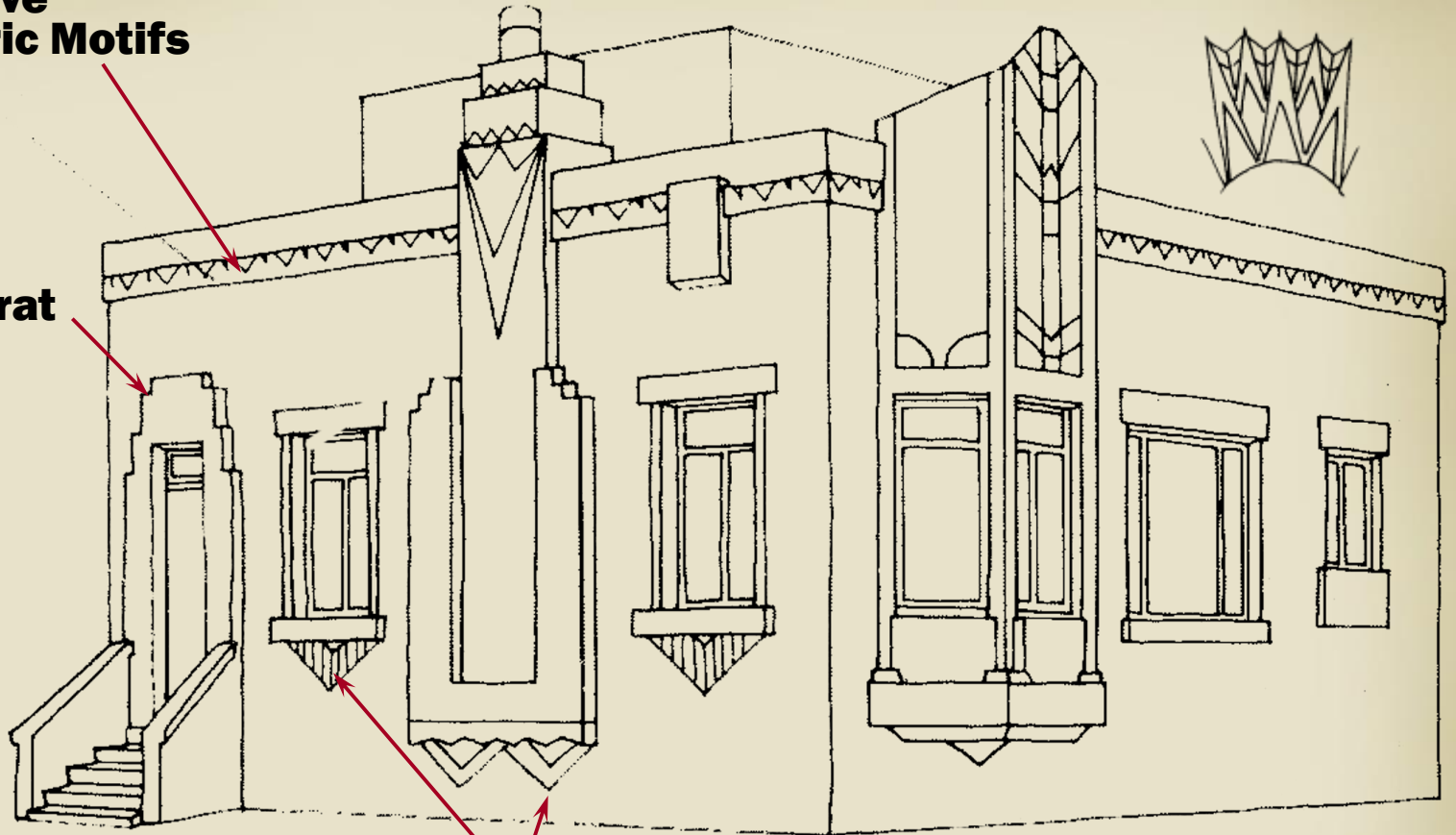


**Decorative
Geometric Motifs**

Sunrise Pattern

Ziggurat

**Fluting
Reeding
Lozenge**



Drawing by Juan Rodriguez-Arnaiz, A Field Guide to American Houses, 1984.

Chevrons

**Common Siding Treatments:
Brick, Terra Cotta, Limestone,
Custom Metal Work**

Art Deco
1925-1940



Plant Motif

Acroterion



3415 36th St.

Tile Border

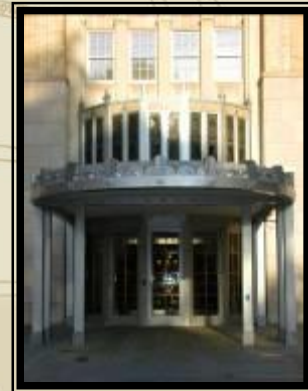


Art Deco





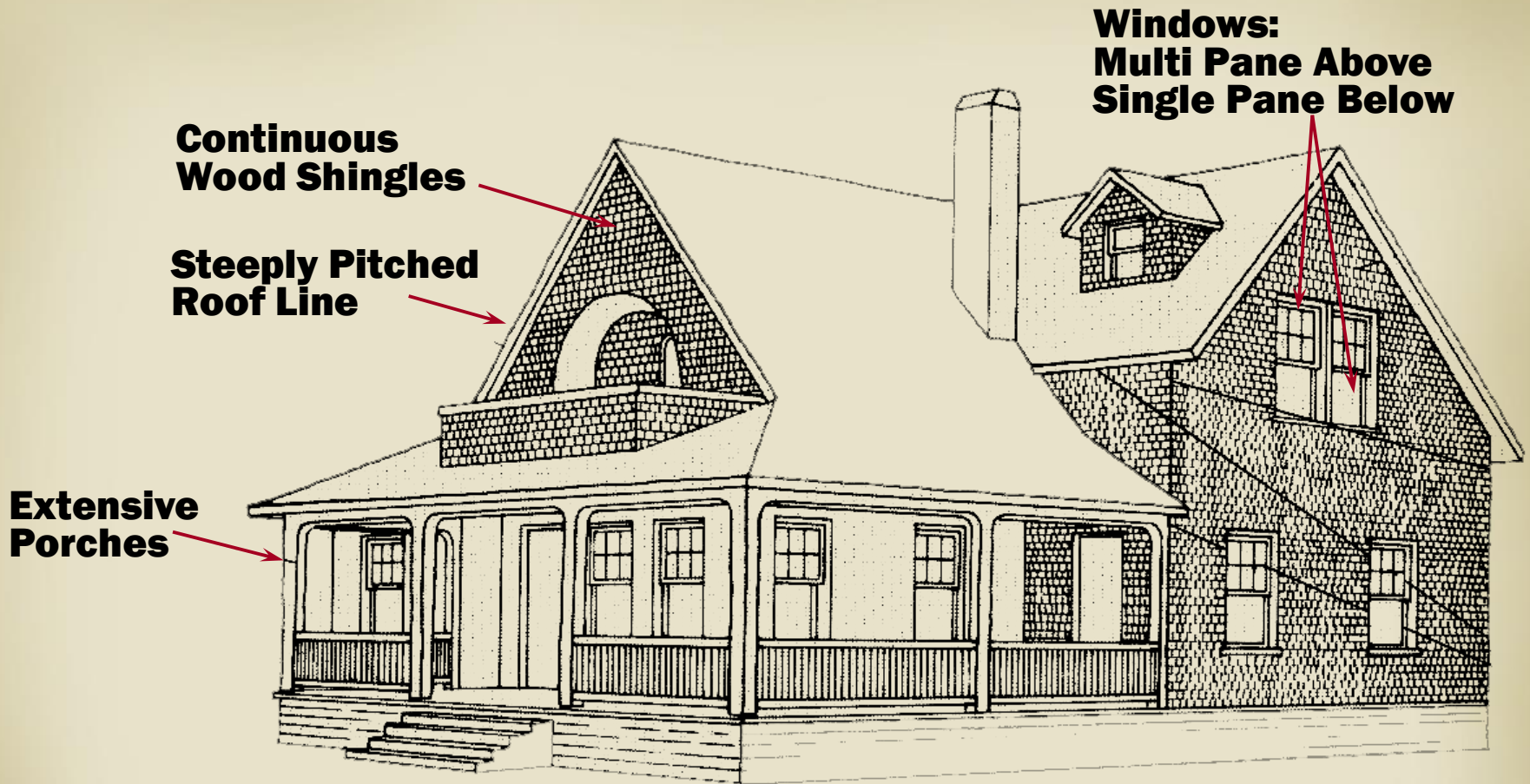
Aluminum Metal Work



3133 Connecticut Ave.

Art Deco





Drawing by Juan Rodriguez-Arnaiz, A Field Guide to American Houses, 1984.

Wood Construction
Asymmetrical Facade

Shingle
1880-1900



Mix of Gable & Hip Roofs

Textured Shingles

Stone Foundation

Recessed Windows

Indirect Entrance

Strips of Three or More Windows

3030 Macomb St.



Shingle

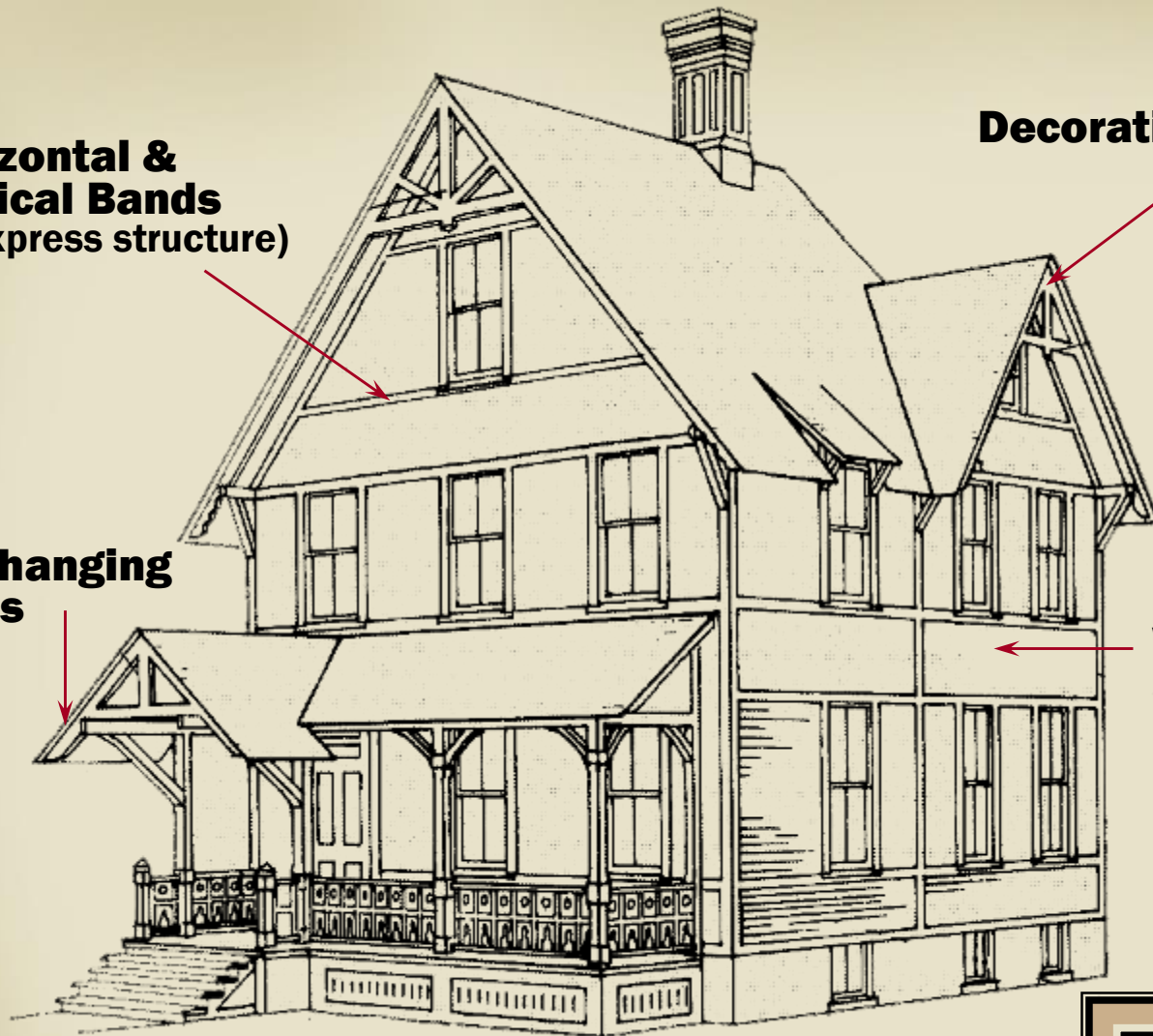


Horizontal & Vertical Bands
(to express structure)

Decorative Trusses in Gables

Overhanging Eaves

Wooden Wall Cladding Boards & Shingles



Drawing by Juan Rodriguez-Araiz, A Field Guide to American Houses, 1984.

Stick
1860-1890



Emlen Physick House
Cape May, NJ

Bottom left, & Above: By Bruce Barnes, Courtesy UMass Dartmouth Library.

Decorative Trusses in Gables

Overhanging Eaves

**Horizontal &
Vertical Bands**

Mark Twain House
Hartford, CT

Stick

“To us, our house was not insentient matter—it had a heart, and a soul, and eyes to see us with, and approvals and solitudes and deep sympathies; it was of us, and we were in its confidence, and lived in its grace and in the peace of its benediction. We never came home from an absence that its face did not light up and speak out of its eloquent welcome—and we could not enter it unmoved.”

Mark Twain 1896

Bruce Wentworth, AIA
bwentworth@AsktheArchitect.org

ASK THE
ARCHITECT
.ORG

