



home matters

HOW TO MAKE THE MOST OF YOUR *Home Remodel*

TIPS FOR GETTING WHAT YOU WANT WHEN
EMBARKING ON A MAJOR RENOVATION

By Bruce Wentworth, AIA, www.wentworthstudio.com

Many factors come into play when embarking on a home renovation including budget, time constraints, whether to stay in the home during renovations or relocate short term and probably one of the more challenging efforts from the contractor's perspective is permitting. And many homes in Chevy Chase Village and throughout the Washington, DC region also have a community HOA that must approve proposed renovations as well.

Where to Begin

The first step for homeowners is deciding what renovations are essential for your home, what will have the greatest impact on your quality of life. Is it a kitchen remodel and if so, will other areas of the home also need renovations to complement the new kitchen? What about dated baths? All renovations increase the value of a home, but kitchens and baths are among the most beneficial.

Who to Work With

The second step is finding the right firm to work with. Design-build firms such as Wentworth, Inc. provide architectural, design and building services under one roof and this is often the best option so you have one point of contact throughout the process and licensed professionals who will see the job through from beginning to end.

Questions to Ask

A recent example, a 1980s home in Rock Creek Park, highlights some of the challenges homeowners and contractors face when embarking on a home remodeling project. In this case, the homeowners loved the woodland views in their newly purchased home, but didn't like the compartmentalized and

Framed openings are architectural elements to clearly define spaces, which in this case includes the kitchen, dining room, dry bar and family areas to allow for informal modern living.



Left: Also consider shape and proportion when connecting spaces such as the rectangular furniture-like kitchen island that echoes the shape of the walnut dining table.

Color is another important element that makes a major statement. Here the dining area features an accent wall in a dark gray-blue which complements the wood tones of the furniture and art, as well as connects thematically to the kitchen and dry bar through the use of color.



surroundings and enhances the natural light. The generous space measuring 17' x 37' with 9' ceilings was ideal as the clean canvas for the new modern updates.

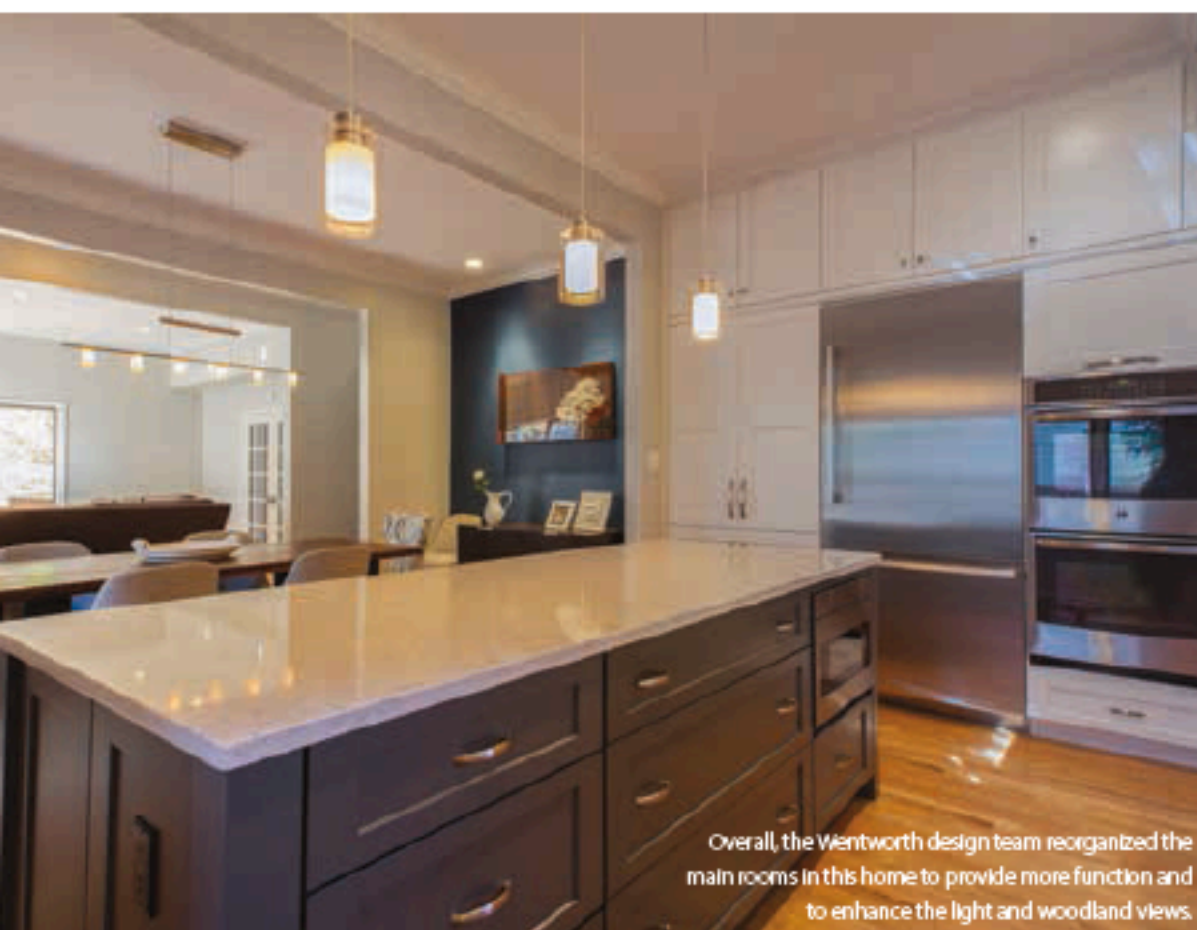
While the family wanted an open concept, it's still important to blend

Think about custom and unique pieces to set the spaces apart. For instance, the 8' island with storage anchors the kitchen and provides a spot for buffet-style dining. Large scale 4" x 8" subway tiles were placed in a zigzag pattern for a fresh, updated take on a more traditional material, while a votive-like frosted glass fixture in the dining area, and pendants reminiscent of hurricane lamps in the kitchen provide understated yet ample lighting.

The Solution

Originally the overly large existing rooms were closed off from each other and not conducive to informal family life. A too-big, inefficient kitchen took up more space than was required and isolated itself away from the rest of the first floor. The design-build team reorganized the space to provide more storage in a smaller footprint, and removed unnecessary walls to open up the space to provide light and woodland views throughout. Key elements to a successful remodeling project include deciding early on what your remodeling goals are and finding the best firm to accomplish them.

Bruce Wentworth, AIA, is a licensed architect and contractor in MD, DC, and VA. Wentworth, Inc. provides residential design and construction to homeowners seeking to remodel their homes, www.wentworthstudio.com.



Overall, the Wentworth design team reorganized the main rooms in this home to provide more function and to enhance the light and woodland views.



The new custom built-in dry bar with wine storage acts as a focal point for an existing entry bisecting the open space and now defining the family room from the dining area.



The dining area features an accent wall in a dark gray-blue that not only complements the wood tones of the furniture and art, but also connects thematically to the kitchen and dry bar through the use of color.